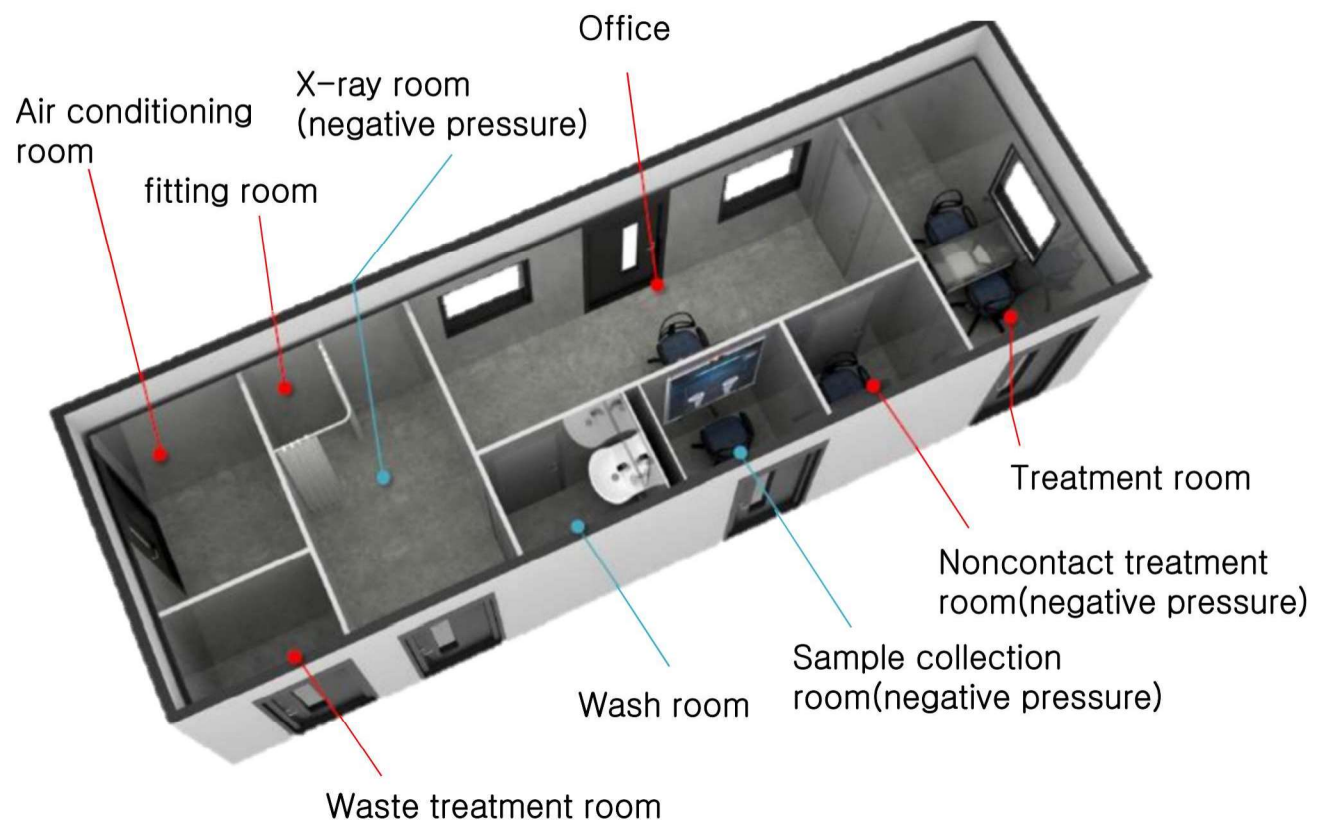


Clinic of Pulmonology (Phase 4)



Patient's Room (Phase 5)



Computer rendering

Real structure

- Application of advanced materials made of main structural parts and fireproof insulation
 - Composite Sip(Litepan)
- Airtight insulation system with insulation performance r20 (up to r47 possible)
- Excellent sound insulation performance (up to STC45)
- Various finishing options such as fireproof aluminum
- Modular/prefab dry assembly: bathroom, sink, shower, hot water boiler
- Plug and play: Simple piping and wiring can be used immediately after field connection

Patient's Room (Phase 5)



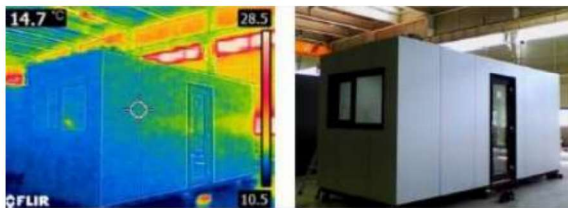
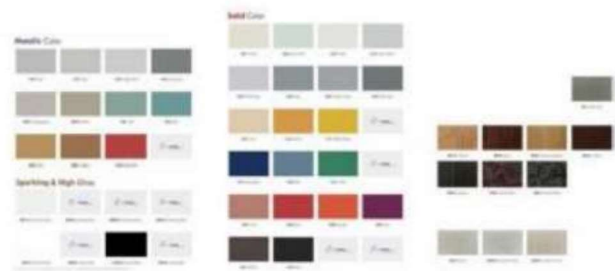
Material

Exterior Finishing Plan



Basic exterior specifications

- Fireproof ACP(Aluminum composite panel)
- Various colors and patterns



Energy efficient design / isolation

- zero thermal bridge
(refer to the infrared camera left)
- insulation characteristics
- 30-60 minutes fireproof system
- High airtight insulation system construction

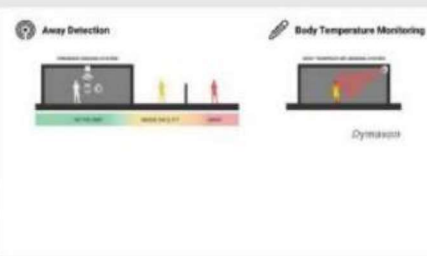
Installation (Phase 4 and 5)



Delivery & Installation



- Designed to ship in a 40ft HC container
- Move by crane, forklift, etc.
- base frame module at the bottom, no additional basic work is required



Thank you!